

**OVERSPEED GOVERNOR ACTING  
IN ASCENT AND DESCENT  
OF THE CABIN****MODELS 20.200 & 20.300 EUROPA****DESCRIPTION**

These overspeed governors are set in motion when the levers open by centrifugal force, both in ascents and descents, when the cabin overspeeds.

The locking device for overspeeding is created by the centrifugal force which opens the levers pushing them towards a roller in the centre of the pulley where a solid, fixed locking device connects with the axis of the pulley via a wedge.

The roller revolves in the same direction as the lift until it touches the disc of the locking device and is stopped between the disc and the wedge of the pulley, thus producing the mechanical locking of the overspeed governor.

This system allows infinite locking points as they can be produced in any part of the roller around the disc.

These overspeed governors are valid for setting off instantaneous grip gears with rollers, which are instantaneous with a cushioning and progressive effect.

The release speed of the electric safety device, and of the locking device are regulated by a loaded factory sealed draught spring. To prevent tampering, the lead seals used are etched with the brandname GERVALL.

The setting off of the electric safety device is achieved by an adjustment to one of the levers, which as the speed increases, but without reaching the mechanical speed of the overspeed governor, approaches a cogged rim fitted to a cog. When this adjustment contacts with the cogged rim, it adopts the turning speed of the pulley, and sets off the electric contact by means of the cog.

A remote control locking device for the overspeed governor can be set up, by means of an electromagnet 24Vcc and maximum consumption of 1,90A.

**ASSEMBLY**

There are two 16mm diameter bores for fastening with screws or studs at the base of the overspeed governor at a distance "C", which varies according to the model.

An arrow etched on the pulley indicates in which direction it should turn when the cabin is descending.

Associated with the overspeed governor, the assembly counterweight or return pulley should be assembled in such a way as to provide the necessary tension on the cable for the grip gear to work.

The return pulley is attached to the lift guide by means of a plate and three flanges, the pulley and the counterweight being suspended from this plate. The electric safety device is also attached to the plate at the bottom, and this will be activated in the event of the overspeed governor cable breaking or loosening.

The fastening plate has a number of slots to allow the necessary distance between the cable and the guide axis to be regulated, and also to fasten it to guides of various widths.

**CONNECTION**

The contacts of the electric safety device for overspeed should be contacted. The tension is 240V and the intensity is 3A.

The opening of the electric safety device caused by the rotating of the levers when there is overspeeding in the cabin should cause the machine to stop.

The contacts of the electric safety device of the return pulley should also be connected in such a way that the machine stops in the event of being activated by a breaking or loosening of the cable. The tension is 250V and the intensity is 0.25A.

**ADJUSTMENT**

The release speed of the electric safety device and of the locking of the levers are factory-adjusted, in keeping with the prevailing standards and the spring comes sealed.

These adjustments may not be manipulated, the leads of the seals have the brand GERVALL etched on them to assure that the regulation is the one that was carried out at the factory as indicated by the identification label of the overspeed governor.

**CHECKING SYSTEM**

In overspeed governors with test pulleys, change the cable of the channel in which it is mounted to the smallest channel which is attached, then when this causes the lift to descend or ascend, the overspeed governor will rotate at the same, or at a slightly higher speed as the locking mechanism, and the levers will open by the centrifugal force and will then lock.

In the case when the cable changes pulley, the return pulley will go down and may activate the electric safety device, making it necessary to adjust the return pulley to carry out the test.

After the locking of the overspeed governor, it is necessary to reset the electricity safety device for overspeed.

If there is no test pulley for the overspeed governor a remote locking device can be installed. This would be the case for machine roomless lifts.

**MAINTENANCE**

All the rotation axes of the overspeed governor and of the return pulley have autolubricating bronze caps, which means that they do not require any subsequent greasing or maintenance.

At the same time, greasing of the cable can reduce the adherence of the cable and the channel of the overspeed governor. This could reduce the strength of the test pulley.

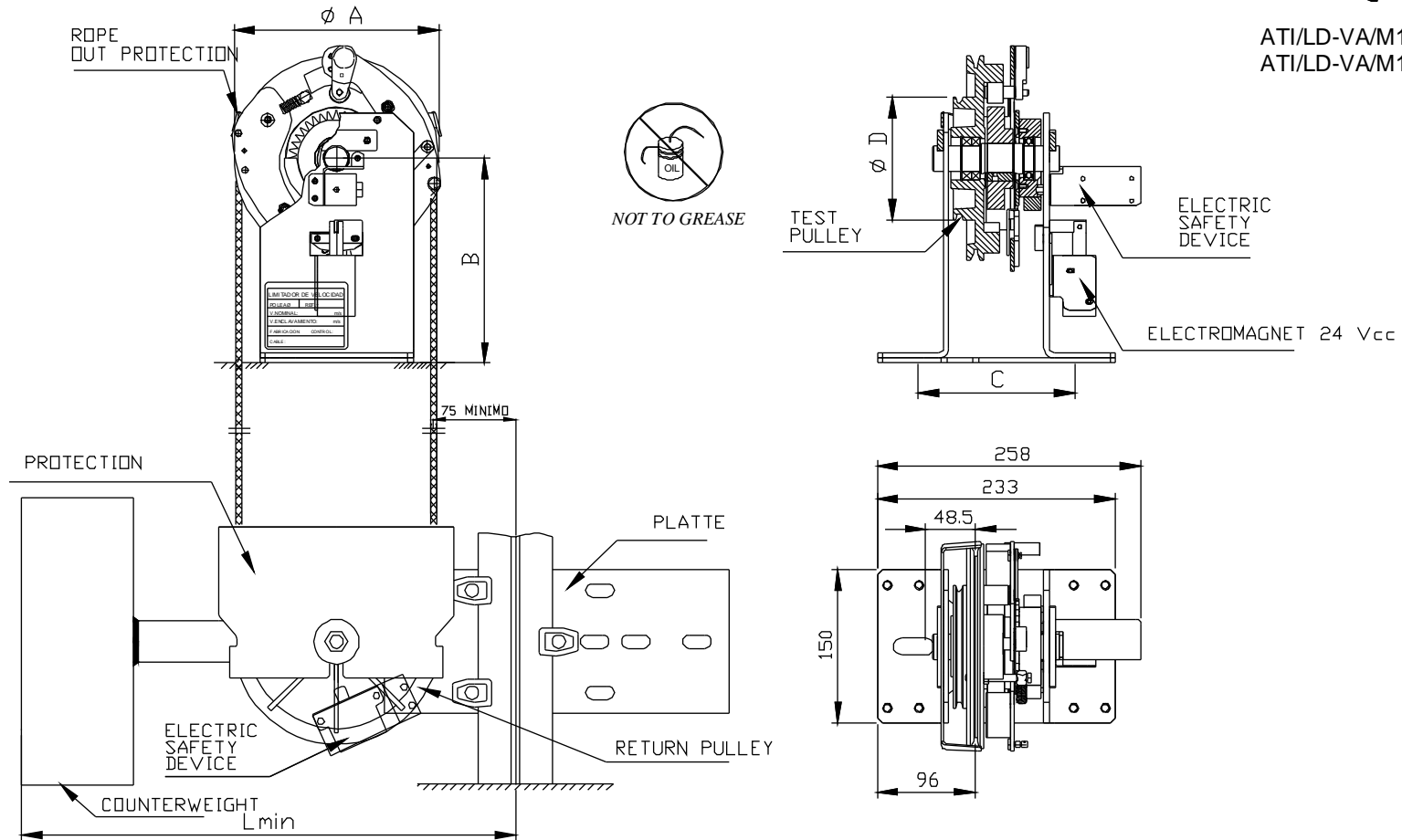
Two things should be kept in mind to avoid incorrect operation of the overspeed governor. First, mobile elements should be kept clean to avoid possible malfunction. The installer should ensure of the perfect condition. Second, although the equipment leaves the factory finished to avoid corrosion, the installer should check the parts, and act where appropriate. The maintenance company will determine the frequency of inspections, but they should take into account the atmosphere where the equipment is installed.

**RESPONSIBILITIES**

Gervall cannot be held responsible for problems caused due to not following advice for their products. Neither are they responsible for the handling of sealing.

## OVERSPEED GOVERNORS DESCENT AND ASCENT

ATI/LD-VA/M174/08 Ø200  
ATI/LD-VA/M175/08 Ø300



MODEL	Ø A	B	C min	C max	Ø D	Lmin	CARACTERISTICS	CARACTERISTICS	CABLE	COUNTERWEIGHT
20.201	200	200	138	185	120	463	TEST PULLEY	CONTACT MANUAL RESET- NORNAL SIZE BASE	6 mm 6x19+1	12.064.0A
20.202	200	200	138	185	120	463	TEST PULLEY	CONTACT AUTO. RESET - REMOTE TRIPPING - NORMAL SIZE BASE		
20.205	200	200	138	185	120	463	TEST PULLEY	CONTACT MANUAL RESET - SMALL SIZE		
20.206	200	200	138	185	180	545	TEST PULLEY	CONTACT AUTOMATIC RESET - REMOTE TRIPPING - SMALL BASE	6 - 8 mm 6x19+1	12.065.0A
20.301	300	200	138	185	180	545	TEST PULLEY	CONTACT MANUAL RESET- NORNAL SIZE BASE		
20.302	300	200	138	185	180	545	TEST PULLEY	CONTACT AUTO. RESET - REMOTE TRIPPING - NORMAL SIZE BASE		
20.305	300	200	138	185	180	545	TEST PULLEY	CONTACT MANUAL RESET - SMALL SIZE		
20.306	300	200	138	185	180	545	TEST PULLEY	CONTACT AUTOMATIC RESET - REMOTE TRIPPING - SMALL BASE		